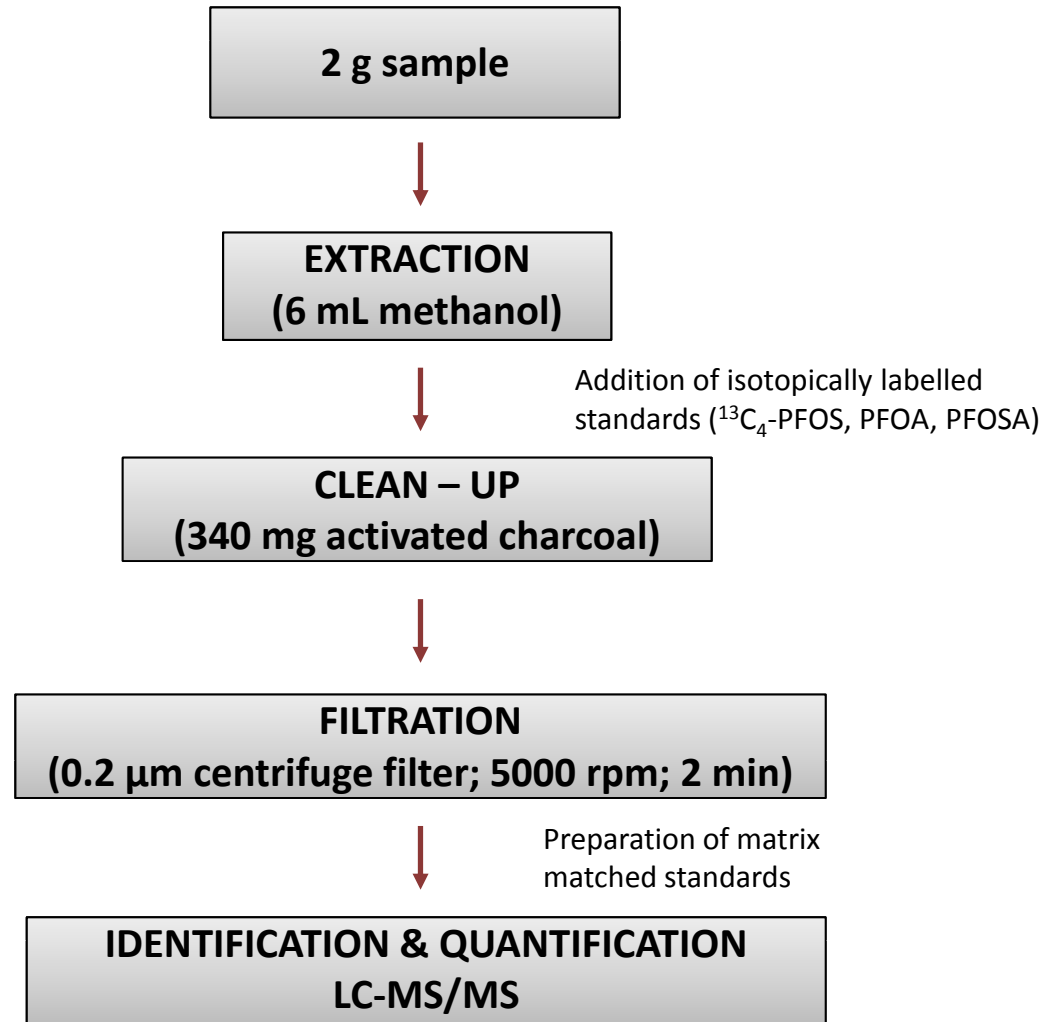


Flow chart – PFCs analysis

Matrix: fish muscles





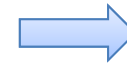
2 g sample



transfer to homogenisation tube



6 mL methanol



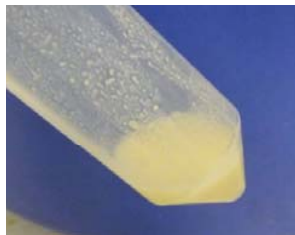
extraction



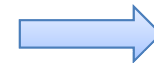
addition of isotopically labelled standards



transfer homogenate to PP centrifuge tube



addition of activated charcoal



properly shake/vortex



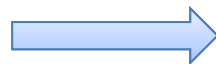
centrifugation (10000 rpm; 5 min)



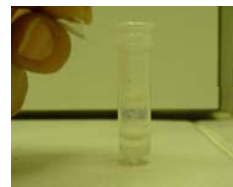
after centrifugation



transfer supernatant to 0.2 centrifuge filter



centrifugation (5000 rpm; 2 min)



after centrifugation



transfer to vial



LC-MS analysis